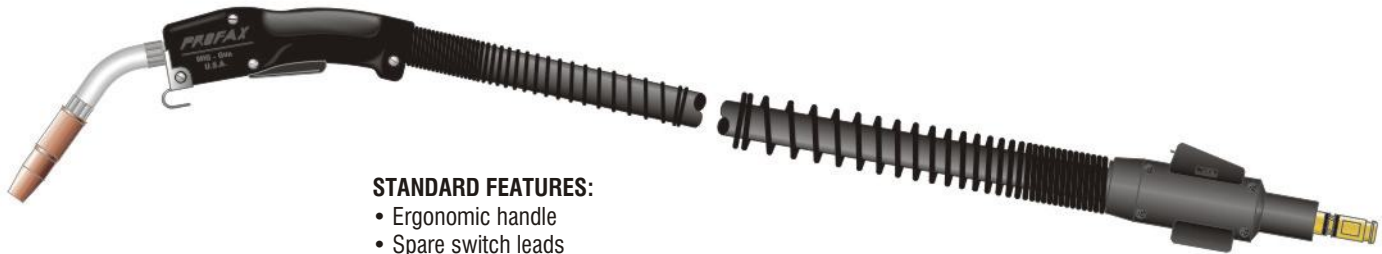




# Platinum Compact 250 Amp Mig Gun **PROFAX**

Platinum Compact 250 Amp Mig Gun



**STANDARD FEATURES:**

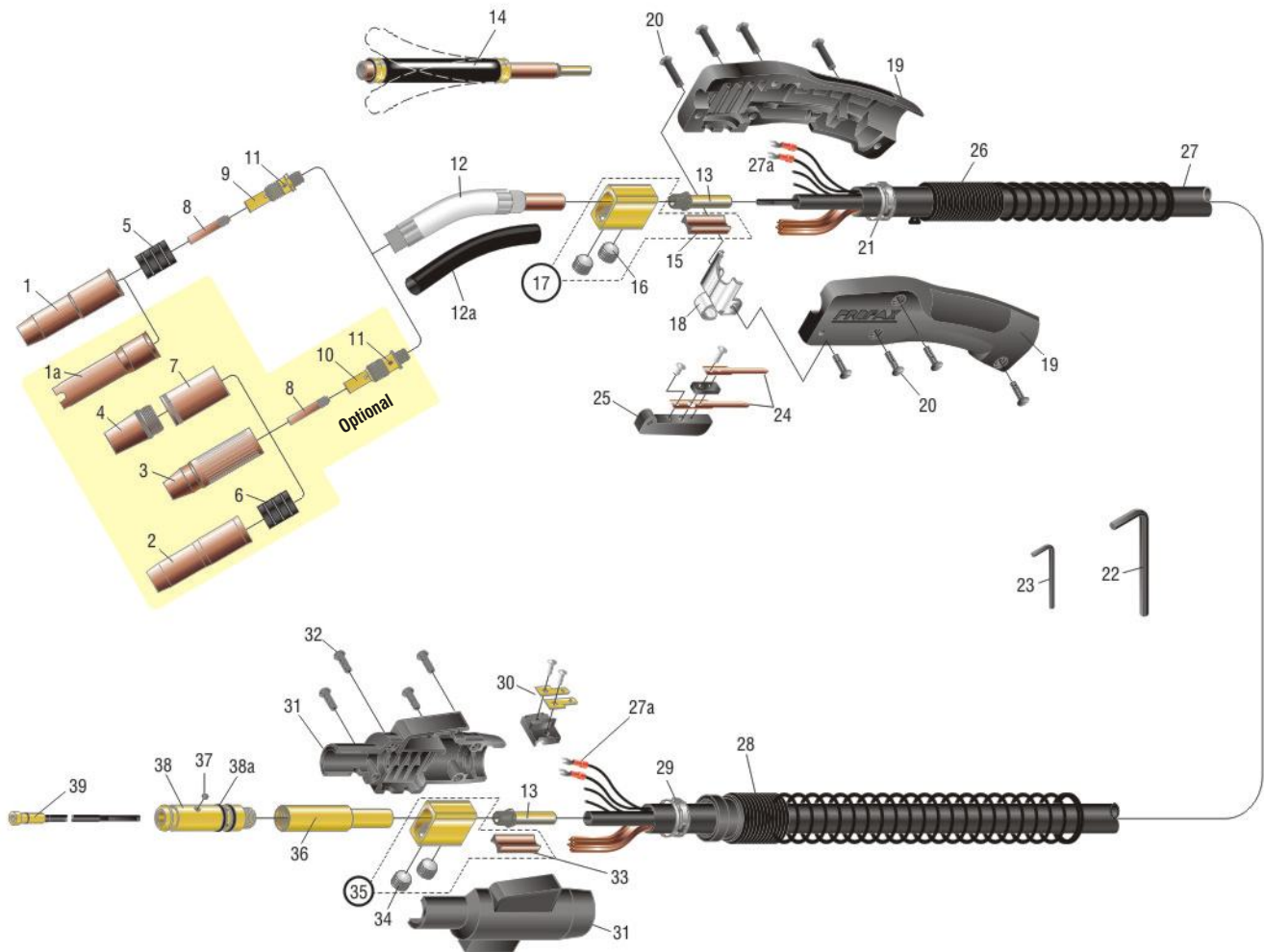
- Ergonomic handle
- Spare switch leads
- Extra flexible cable
- Spring strain reliefs
- Jacketed gooseneck

PROFAX NO.	LENGTH	WIRE SIZE	PROFAX NO.	LENGTH	WIRE SIZE	PROFAX NO.	LENGTH	WIRE SIZE	PROFAX NO.	LENGTH	WIRE SIZE
250-3035-10	10'	.030-.035	250-3035-12	12'	.030-.035	250-3035-15	15'	.030-.035	250-3035-20	20'	.030-.035
250-4045-10	10'	.040-.045	250-4045-12	12'	.040-.045	250-4045-15	15'	.040-.045	250-4045-20	20'	.040-.045
250-052-10	10'	.052	250-052-12	12'	.052	250-052-15	15'	.052	250-3035-25	25'	.030-.035
									250-4045-25	25'	.040-.045

**TO ORDER DIRECT CONNECT MIG GUNS**

- Standard -** All wire feeders that accept the "PROFAX" rear adapter. e.g. 250-3035-10
- Lincoln® Direct -** Add an **LN** for the standard Lincoln 3/4" dia. rear adapter. e.g. LN250-3035-10  
Add an **LP** for the Lincoln Powermig 255. e.g. LP250-3035-10
- Miller® Direct** Add an **M**. e.g. M250-3035-10
- Euro-Quick** Add an **X**. e.g. X250-3035-10

SEE PAGES 46-47 for more details on direct connects  
SEE PAGES 78-79 for list of adapter kits





# Platinum Compact 250 Amp Mig Gun Parts List

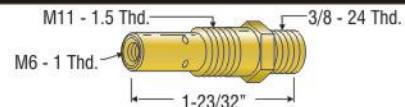


NO.	PROFAX NO.	DESCRIPTION	NO.	PROFAX NO.	DESCRIPTION
1.	22-37 22-50 22-62 22-37SS 22-50SS 22-62SS 22T37SS	Nozzle 3/8", adj., use w/32 & 52 Nozzle 1/2", adj., use w/32 & 52 (standard) Nozzle 5/8", adj., use w/32 & 52 Nozzle 3/8", short stop, use w/32 & 52 Nozzle 1/2", short stop, use w/32 & 52 Nozzle 5/8", short stop, use w/32 & 52 Nozzle 3/8", short stop, tapered, use w/32 & 52	12.	62A45J 62A45-9J 62A60J 62A80J 62A180J 62A45 62A60 62A80 62A180	Jacketed conductor tube 45° (standard) Jacketed conductor tube 45° - 9 inch Jacketed conductor tube 60° Jacketed conductor tube 80° Jacketed conductor tube 180° Conductor tube 45° Conductor tube 60° Conductor tube 80° Conductor tube 180°
1a.	22-62FAS	Spot nozzle	12a.	72A	Replacement neoprene insulator
2.	24A50 24A62 24A75 24A50SS 24A62SS 24AT37SS 24A75SS 24AH50 24AH62 24AH75	Nozzle 1/2", adj., use w/34A Nozzle 5/8", adj., use w/34A Nozzle 3/4", adj., use w/34A Nozzle 1/2", short stop, adjustable, use w/34A Nozzle 5/8", short stop, adjustable, use w/34A Nozzle 3/8", short stop, tapered, adj., use w/34A Nozzle 3/4", short stop, adjustable, use w/34A Nozzle 1/2", HD, adjustable, use w/34A Nozzle 5/8", HD, adjustable, use w/34A Nozzle 3/4", HD, adjustable, use w/34A	13.	62N	Nipple
3.	23-37 23-50 23-62 23-75 23-37F 23-50F 23-62F 23-75F 23H50 23H62 23T37	Nozzle 3/8", self insulated Nozzle 1/2", self insulated Nozzle 5/8", self insulated Nozzle 3/4", self insulated Nozzle 3/8", self insulated, flush Nozzle 1/2", self insulated, flush Nozzle 5/8", self insulated, flush Nozzle 3/4", self insulated, flush Nozzle 1/2", HD, self insulated Nozzle 5/8", HD, self insulated Nozzle 3/8", self insulated, tapered	14.	TF-2	Flexible barrel
4.	24CT50F 24CT62F 24CT75F 24CT37S 24CT50S 24CT62S 24CT75S	Nozzle 1/2", use w/34CT Nozzle 5/8", use w/34CT Nozzle 3/4", use w/34CT Nozzle 3/8", use w/34CT Nozzle 1/2", use w/34CT Nozzle 5/8", use w/34CT Nozzle 3/4", use w/34CT	15.	112	Separator
5.	32	Insulator	16.	1-MBP-10	1/2-20 ball point screws
6.	34A	Insulator	17.	102	Cable connector block assembly
7.	34CT	Insulator w/coarse thread nozzles	18.	154HD	Hanger
8.	14-23 14-30 14-35 14-40 14-45 14-52 14A364 14H35 14H40 14H45 14H52 14AH364 14T23 14T30 14T35 14T40 14T45 14T52	Contact tip .023 Contact tip .030 Contact tip .035 Contact tip .040 Contact tip .045 Contact tip .052 Contact tip 3/64" (for aluminum) Contact tip .035, HD Contact tip .040, HD Contact tip .045, HD Contact tip .052, HD Contact tip 3/64", HD (for aluminum) Tapered contact tip .023 Tapered contact tip .030 Tapered contact tip .035 Tapered contact tip .040 Tapered contact tip .045 Tapered contact tip .052	19.	82C	Handle w/binder screws
9.	52 52-23	Gas diffuser use w/.030-.045 wire Gas diffuser use w/.023 wire	20.	122FM-SET	Binders (4 ea.) and screws (4 ea.) for handle
10.	52FN	Gas diffuser	21.	132-12	Clamp - handle
11.	44C	Set screws for gas diffuser/conduit	22.	AL-300-25	7/32" hex wrench
			23.	44-25	5/64" hex wrench
			24.	92C	Switch contacts 2 ea. w/screws
			25.	92	Trigger switch assembly
			26.	142-6S	Spring strain relief for handle
			27.	250-10 250-12 250-15 250-20 250-25 250K 250CK	10' replacement cable assembly 12' replacement cable assembly 15' replacement cable assembly 20' replacement cable assembly 25' replacement cable assembly Cable, bulk (per foot) Cloth wrapped cable, bulk (per foot) for guns longer than 15'
			27a.	244	Terminal
			28.	R185-S	Spring
			29.	132-12	Clamp - connector block
			30.	194	Connector tab assembly
			31.	R185-H	Housing
			32.	R185-SC	Screws for housing (4)
			33.	114	Separator
			34.	A-532-24	9/16-18 ball point screw
			35.	104	Cable connector block assembly
			36.	R172-UA R172-UAG	Standard connector plug w/62N Connector plug w/gas hole w/62N
			37.	44C	Set screw for conduit 8-32
			38.	R174-C R174-E R174-H R174-L R174-M R174-T	Connector, Century® Connector, Esab® Connector, Hobart® Connector, Lincoln® Connector, Miller® Connector, standard
			38a	224	O-ring
			39.	42-23-15 42-3035-15 42-4045-15 42-116-15 42-3035-25 42-4045-25 42-116-25 42N-3545-15	15' wire conduit assembly .023 15' wire conduit assembly .030-.035 15' wire conduit assembly .040-.045 15' wire conduit assembly .052 - 1/16" 25' wire conduit assembly .030-.035 25' wire conduit assembly .040-.045 25' wire conduit assembly .052 - 1/16" 15' teflon conduit assembly (aluminum).035-
			.047		

250 Amp Mig Gun Parts List

**PROFAX NO. DESCRIPTION**

51-3/8-24 Special Gas Diffuser Adapts 21 series nozzles and 11 series tips to 250 gun





# Platinum Compact 250 Amp Mig Gun



Platinum Compact 250 Amp Mig Gun

PROFAX NO. DESCRIPTION		TIP I.D.	PROFAX NO. DESCRIPTION								
14-23	Contact tip .023	.031	<p><b>Standard Series Tips</b></p>	22-62	Nozzle 5/8"	<p>(Adjustable used with 32 insulator and 52 gas diffuser)</p>					
14-30	Contact tip .030	.038		<p><b>Tapered Series Tips</b></p>	22-62FAS	Spot Nozzle 5/8"	<p>(Flat arc spot, adjustable used with 32 insulator and 52 gas diffuser)</p>				
14-35	Contact tip .035	.044			<p><b>Heavy Duty Series Tips</b></p>	22-37SS	Nozzle 3/8"	<p>(Short stop, adjustable used with 32 insulator and 52 gas diffuser)</p>			
14-40	Contact tip .040	.047				<p><b>Heavy Duty Tapered Series Tips</b></p>	22-50SS	Nozzle 1/2"	<p>(Short stop, adjustable used with 32 insulator and 52 gas diffuser)</p>		
14-45	Contact tip .045	.054					<p>(Adjustable used with 32 insulator and 52 gas diffuser)</p>	22-62SS	Nozzle 5/8"	<p>(Short stop, adjustable used with 32 insulator and 52 gas diffuser)</p>	
14-52	Contact tip .052	.064						<p>(Adjustable used with 32 insulator and 52 gas diffuser)</p>	22T37SS	Tapered nozzle 3/8"	<p>(Short stop, used with 32 insulator and 52 gas diffuser)</p>
14A364	Contact tip 3/64"	.059									
14T23	Contact tip .023	.031									
14T30	Contact tip .030	.038									
14T35	Contact tip .035	.044									
14T40	Contact tip .040	.047									
14T45	Contact tip .045	.054									
14T52	Contact tip .052	.064									
14H35	Contact tip .035	.044									
14H40	Contact tip .040	.049									
14H45	Contact tip .045	.054									
14H52	Contact tip .052	.064									
14AH364	Contact tip 3/64"	.059									
14HT35	Contact tip .035	.044									
14HT40	Contact tip .040	.049									
14HT45	Contact tip .045	.054									
14HT52	Contact tip .052	.064									
22-37	Nozzle 3/8"										
22-50	Nozzle 1/2"										





# Platinum Compact 250 Amp Mig Gun



Platinum Compact  
250 Amp Mig Gun

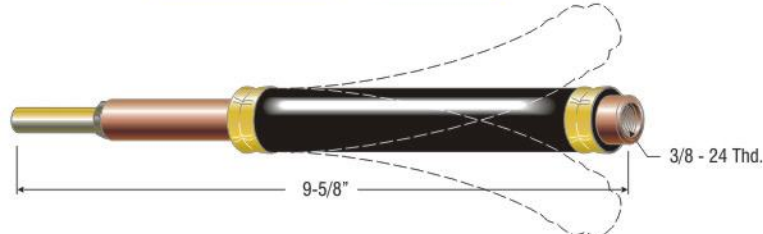
PROFAX NO.	DESCRIPTION	PROFAX NO.	DESCRIPTION
32	Insulator  (Used with adjustable nozzles)	52-23	Gas diffuser  (Used with 32 insulator .023 diameter wire)
52	Gas diffuser  (Used with 32 insulator .030 thru .052 diameter wire)	52FN	Gas diffuser  (Use with 23 series nozzles or with 34A and 24 series nozzles)

PROFAX NO.	DESCRIPTION
62A45	Conductor tube 45°
62A60	Conductor tube 60°
62A80	Conductor tube 80°
62A180	Conductor tube 180°
62N	Nipple - included

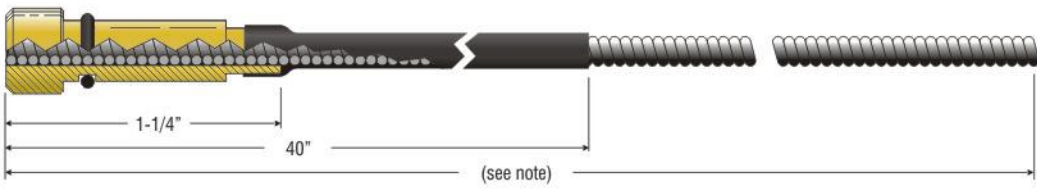
Special length and bend goosenecks available on request.

PROFAX NO.	DESCRIPTION
62A45J	Jacketed conductor tube 45°
62A60J	Jacketed conductor tube 60°
62A180J	Jacketed conductor tube 180°
62N	Nipple - included

Special length and bend goosenecks available on request.

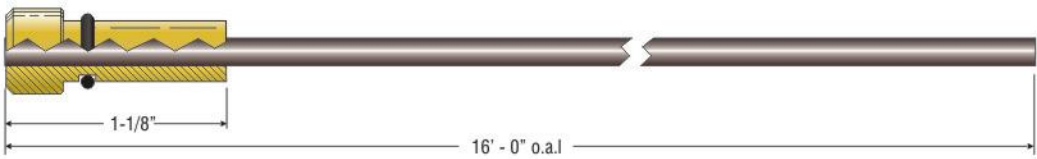


PROFAX NO.	DESCRIPTION	PROFAX NO.	DESCRIPTION	FOR SPECIAL APPLICATIONS THESE TF2'S ARE AVAILABLE ON REQUEST.
TF-2	PROFAX flexible barrel	TF2-12SP	PROFAX flexible barrel 16" over all length	
TFX-2	PROFAX flexible barrel for extreme heat	TF2-16SP	PROFAX flexible barrel 20" over all length	



Note: 15' wire conduit assembly (16' - 0" o.a.l.)  
25' wire conduit assembly (26' - 0" o.a.l.)

PROFAX NO.	DESCRIPTION	I.D.	O.D.
42-23-15	15' wire conduit assembly — used with .023 diameter wire	.044	.125
42-3035-15	15' wire conduit assembly — used with .030-.035 diameter wire	.052	.156
42-4045-15	15' wire conduit assembly — used with .040-.045 diameter wire	.060	.156
42-116-15	15' wire conduit assembly — used with .052-1/16" diameter wire	.078	.156
42-3035-25	25' wire conduit assembly — used with .030-.035 diameter wire	.052	.156
42-4045-25	25' wire conduit assembly — used with .040-.045 diameter wire	.060	.156
42-116-25	25' wire conduit assembly — used with .052-1/16" diameter wire	.078	.156



PROFAX NO.	DESCRIPTION	I.D.	O.D.
42N-3545-15	15' teflon conduit assembly — used with .035-.047 aluminum wire	.065	.138



# Platinum SPG250 250 Amp Slim Line Mig Gun



## STANDARD FEATURES:

- Swivel Gooseneck
- Slim Line Handle
- Locking Trigger Optional
- Extra Flexible Cable
- ACME Thread Nozzle

Platinum SPG250  
Slim Line Mig Gun

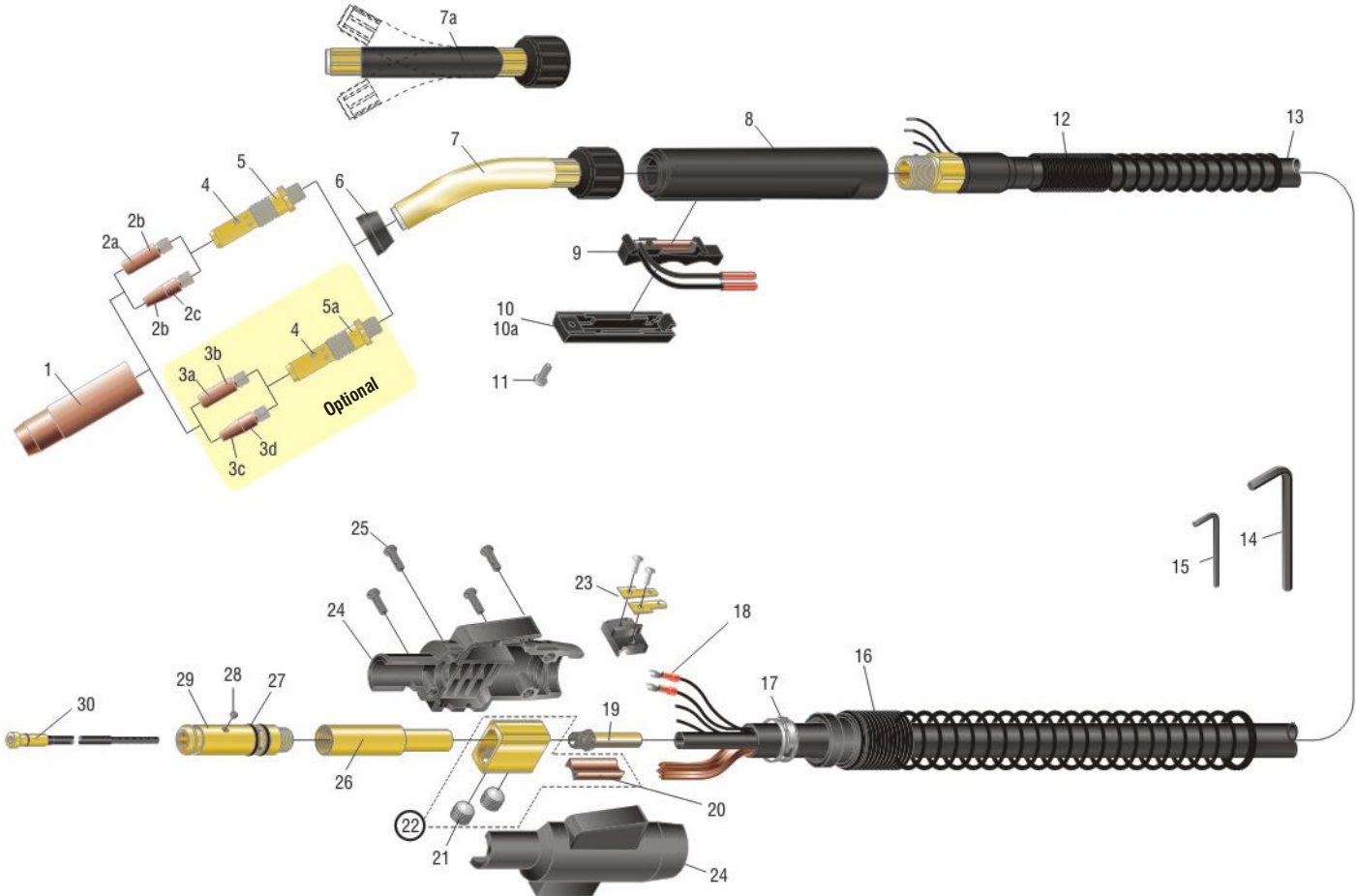


PROFAX NO.	LENGTH	WIRE SIZE	PROFAX NO.	LENGTH	WIRE SIZE	PROFAX NO.	LENGTH	WIRE SIZE	PROFAX NO.	LENGTH	WIRE SIZE
SP250-3035-10	10'	.030-.035	SP250-3035-12	12'	.030-.035	SP250-3035-15	15'	.030-.035	SP250-3035-20	20'	.030-.035
SP250-4045-10	10'	.040-.045	SP250-4045-12	12'	.040-.045	SP250-4045-15	15'	.040-.045	SP250-4045-20	20'	.040-.045
SP250-052-10	10'	.052	SP250-052-12	12'	.052	SP250-052-15	15'	.052	SP250-052-20	20'	.052
									SP250-3035-25	25'	.030-.035
									SP250-4045-25	25'	.040-.045
									SP250-052-25	25'	.052

## TO ORDER DIRECT CONNECT MIG GUNS

- Standard -** All wire feeders that accept the "PROFAX" rear adapter. e.g. SP250-3035-10  
**Lincoln® Direct -** Add an **LN** for the standard Lincoln 3/4" dia. rear adapter. e.g. SPLN250-3035-10  
 Add an **LP** for the Lincoln Powermig 255. e.g. SPLP250-3035-10  
**Miller® Direct** Add an **M**. e.g. SPM250-3035-10  
**Euro-Quick** Add an **X**. e.g. SPX250-3035-10

SEE PAGES 46-47 for more details on direct connects  
 SEE PAGES 78-79 for list of adapter kits





# Platinum SPG250 250 Amp Slim Line Mig Gun



NO.	PROFAX NO.	DESCRIPTION	NO.	PROFAX NO.	DESCRIPTION
1.	23CT-37	Nozzle 3/8" (Requires tapered tip)	7.	66-30	30° swivel gooseneck
	23CT-50	Nozzle 1/2" (Requires tapered tip)		66-45	45° swivel gooseneck
	23CT-62	Nozzle 5/8" (Standard)		66-60	60° swivel gooseneck - standard
	23CT-75	Nozzle 3/4"		66-180	180° swivel gooseneck
2a.	17S-35	Contact tip .035	7a.	TF-41SP	Flexible gooseneck (optional)
	17S-40	Contact tip .040		TFX-41SP	Flexible gooseneck for extreme heat (optional)
	17S-45	Contact tip .045	8.	82SP	Handle
	17AS-364	Contact tip 3/64"	9.	90T	Trigger w/leads (Used on both standard & locking trigger)
	17S-52	Contact tip .052	10.	91	Trigger housing w/screw (Standard)
2b.	16S-35	Contact tip .035	10a	91L	Locking trigger housing w/screw
	16S-40	Contact tip .040	11.	199	Screw 8-32 x 1/2 inch
	16S-45	Contact tip .045	12.	140-6SP	Support spring
	16S-52	Contact tip .052	13.	SP210	10' replacement cable assembly
2c.	17ST-35	Contact tip .035		SP212	12' replacement cable assembly
	17ST-40	Contact tip .040		SP215	15' replacement cable assembly
	17ST-45	Contact tip .045		SP220	20' replacement cable assembly
	17ST-52	Contact tip .052		SP225	25' replacement cable assembly
2d.	16ST-35	Contact tip .035	14.	AL-300-25	7/32" hex wrench
	16ST-40	Contact tip .040	15.	44-25	5/64" hex wrench
	16ST-45	Contact tip .045	16.	R185-S	Spring
	16ST-52	Contact tip .052	17.	132-12	Clamp - connector block
3a.	14-23	Contact tip .023	18.	244	Terminal
	14-30	Contact tip .030	19.	62N	Nipple
	14-35	Contact tip .035	20.	114	Separator
	14-40	Contact tip .040	21.	A-532-24	9/16"-18 ball point screws
	14-45	Contact tip .045	22.	104	Cable connector block assembly
	14-52	Contact tip .052	23.	194	Connector tab assembly
	14A364	Contact tip 3/64"	24.	R185-H	Housing
3b.	14H35	Contact tip .035	25.	R185-SC	Screws for housing (4)
	14H40	Contact tip .040	26.	R172-UA	Standard connector plug
	14H45	Contact tip .045		R172-UAG	Connector plug w/gas hole
	14H52	Contact tip .052	27.	224	O-ring
	14AH364	Contact tip 3/64"	28.	44C	Set screw for conduit 8-32
3c.	14T23	Contact tip .023	29.	R174-C	Connector, Century®
	14T30	Contact tip .030		R174-E	Connector, Esab®
	14T35	Contact tip .035		R174-H	Connector, Hobart®
	14T40	Contact tip .040		R174-L	Connector, Lincoln®
	14T45	Contact tip .045		R174-M	Connector, Miller®
	14T52	Contact tip .052		R174-T	Connector, standard
3d.	14HT35	Contact tip .035	30.	42-23-15	15' wire conduit assembly .023
	14HT40	Contact tip .040		42-3035-15	15' wire conduit assembly .030-.035
	14HT45	Contact tip .045		42-4045-15	15' wire conduit assembly .040-.045
	14HT52	Contact tip .052		42-116-15	15' wire conduit assembly .052 - 1/16"
4.	44C	Set screw		42-3035-25	25' wire conduit assembly .030-.035
5.	43CT	Gas diffuser (Standard)		42-4045-25	25' wire conduit assembly .040-.045
5a.	40CT	Gas diffuser (Optional for 14 series tips)		42-116-25	25' wire conduit assembly .052 - 1/16"
6.	66SW	Insulator		42N-3545-15	15' teflon conduit assembly (aluminum).035-.047

Platinum SPG250  
Mig Gun Parts List

## Regulator/Flowmeter

### SPECIFICATIONS:

- Brass body
- Preset @ 30 psi
- Flow meter range - 10-60 scfh
- Economical design



## High Quality Multi-Purpose 8 Way Mig Plier

Plier is packaged on display card.



PROFAX NO.	GAS SERVICE	CGA INLET	PROFAX NO.	DESCRIPTION
RF1430-580	Argon & Argon/CO <sub>2</sub> Mixes	580	8WMP	8 Way Mig Plier
RF1430-320	CO <sub>2</sub>	320		





# Platinum SPG250 250 Amp Slim Line Mig Gun



Platinum SPG250  
Slim Line Mig Gun

PROFAX NO.	DESCRIPTION	TIP I.D.		PROFAX NO.	DESCRIPTION	
17S-35 17S-40 17S-45 17AS-364 17S-52	Contact tip .035 Contact tip .040 Contact tip .045 Contact tip 3/64" Contact tip .052	.044 .049 .054 .060 aluminum .064	<p>Recessed</p> <p>Standard tip shipped with gun.</p>	23CT-37	Nozzle 3/8"	<p>Requires 17ST Series Tip</p>
17ST-35 17ST-40 17ST-45 17ST-52	Contact tip .035 Contact tip .040 Contact tip .045 Contact tip .052	.044 .049 .054 .064	<p>Recessed</p>	23CT-50	Nozzle 1/2"	<p>Requires 17ST Series Tip</p>
16S-35 16S-40 16S-45 16S-52	Contact tip .035 Contact tip .040 Contact tip .045 Contact tip .052	.044 .049 .054 .064	<p>Flush</p>	23CT-62	Nozzle 5/8"	
16ST-35 16ST-40 16ST-45 16ST-52	Contact tip .035 Contact tip .040 Contact tip .045 Contact tip .052	.044 .049 .054 .064	<p>Flush</p>	23CT-75	Nozzle 3/4"	
14-23 14-30 14-35 14-40 14-45 14-52 14A364	Contact tip .023 Contact tip .030 Contact tip .035 Contact tip .040 Contact tip .045 Contact tip .052 Contact tip 3/64"	.031 .038 .044 .047 .054 .064 .059				
14T23 14T30 14T35 14T40 14T45 14T52	Contact tip .023 Contact tip .030 Contact tip .035 Contact tip .040 Contact tip .045 Contact tip .052	.031 .038 .044 .047 .054 .064		66SW	Insulator	
14H35 14H40 14H45 14H52 14AH364	Contact tip .035 Contact tip .040 Contact tip .045 Contact tip .052 Contact tip 3/64"	.044 .049 .054 .064 .059		43CT	Gas diffuser (Standard)	
14HT35 14HT40 14HT45 14HT52	Contact tip .035 Contact tip .040 Contact tip .045 Contact tip .052	.044 .049 .054 .064		40CT	Gas diffuser (14 series tips)	



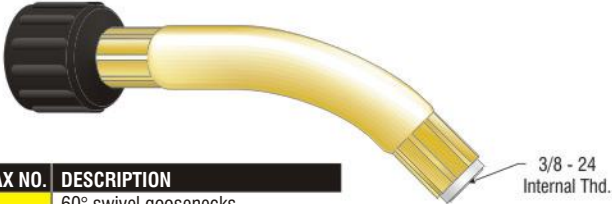
# Platinum SPG250 250 Amp Slim Line Mig Gun



PROFAX NO.	DESCRIPTION
66-30	30° swivel goosenecks



PROFAX NO.	DESCRIPTION
66-45	45° swivel goosenecks



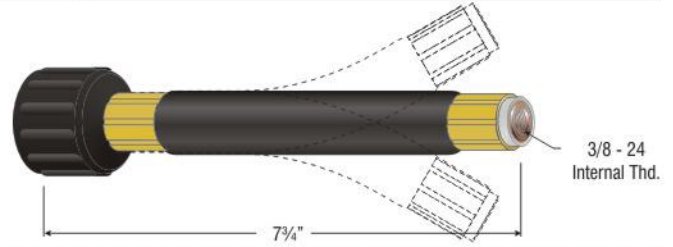
PROFAX NO.	DESCRIPTION
66-60	60° swivel goosenecks



PROFAX NO.	DESCRIPTION
66-180	180° swivel goosenecks

Platinum SPG250  
Slim Line Mig Gun

PROFAX NO.	DESCRIPTION
TF-41SP	PROFAX swivel flexible barrel
TFX-41SP	PROFAX swivel flexible barrel for extreme heat

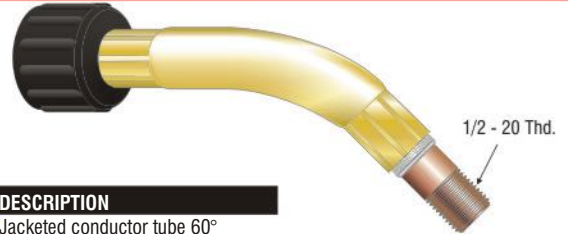


## OPTIONAL

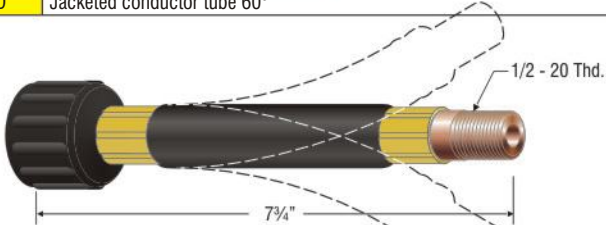
To use HD parts on your Slim Line Gun (27 series nozzle, 17 series tip, 55HD diffuser, and 17SW shock washer) - Order gooseneck and diffuser listed below.



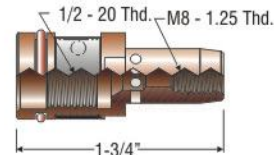
PROFAX NO.	DESCRIPTION
66-45HD	Jacketed conductor tube 60°



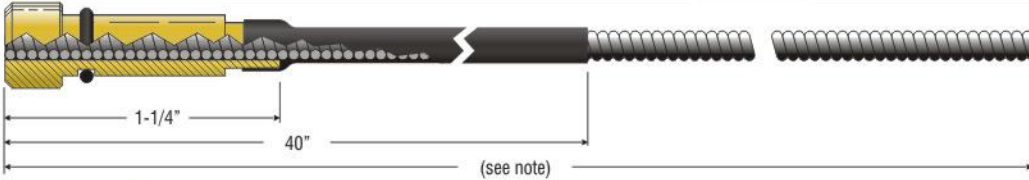
PROFAX NO.	DESCRIPTION
66-60HD	Jacketed conductor tube 60°



PROFAX NO.	DESCRIPTION
TF-41HD	PROFAX swivel flexible barrel
TFX-41HD	PROFAX swivel flexible barrel for extreme heat

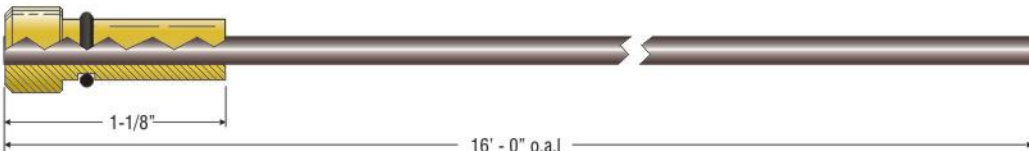


PROFAX NO.	DESCRIPTION
52HD	Heavy duty diffuser



Note: 15' wire conduit assembly (16' - 0" o.a.l.)  
25' wire conduit assembly (26' - 0" o.a.l.)

PROFAX NO.	DESCRIPTION	I.D.	O.D.
42-23-15	15' wire conduit assembly — used with .023 diameter wire	.044	.125
42-3035-15	15' wire conduit assembly — used with .030-.035 diameter wire	.052	.156
42-4045-15	15' wire conduit assembly — used with .040-.045 diameter wire	.060	.156
42-116-15	15' wire conduit assembly — used with .052-1/16" diameter wire	.078	.156
42-3035-25	25' wire conduit assembly — used with .030-.035 diameter wire	.052	.156
42-4045-25	25' wire conduit assembly — used with .040-.045 diameter wire	.060	.156
42-116-25	25' wire conduit assembly — used with .052-1/16" diameter wire	.078	.156



PROFAX NO.	DESCRIPTION	I.D.	O.D.
42N-3545-15	15' teflon conduit assembly — used with .035-.047 aluminum wire	.065	.138

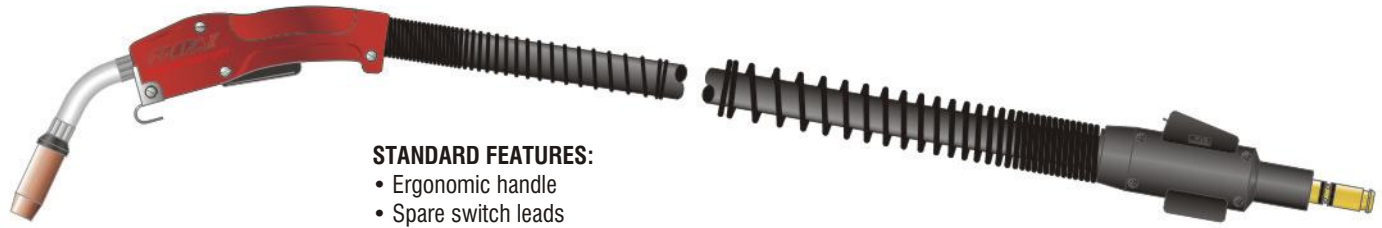




# Platinum 250 Amp Heavy Duty



250 Amp H.D.  
Mig Gun



### STANDARD FEATURES:

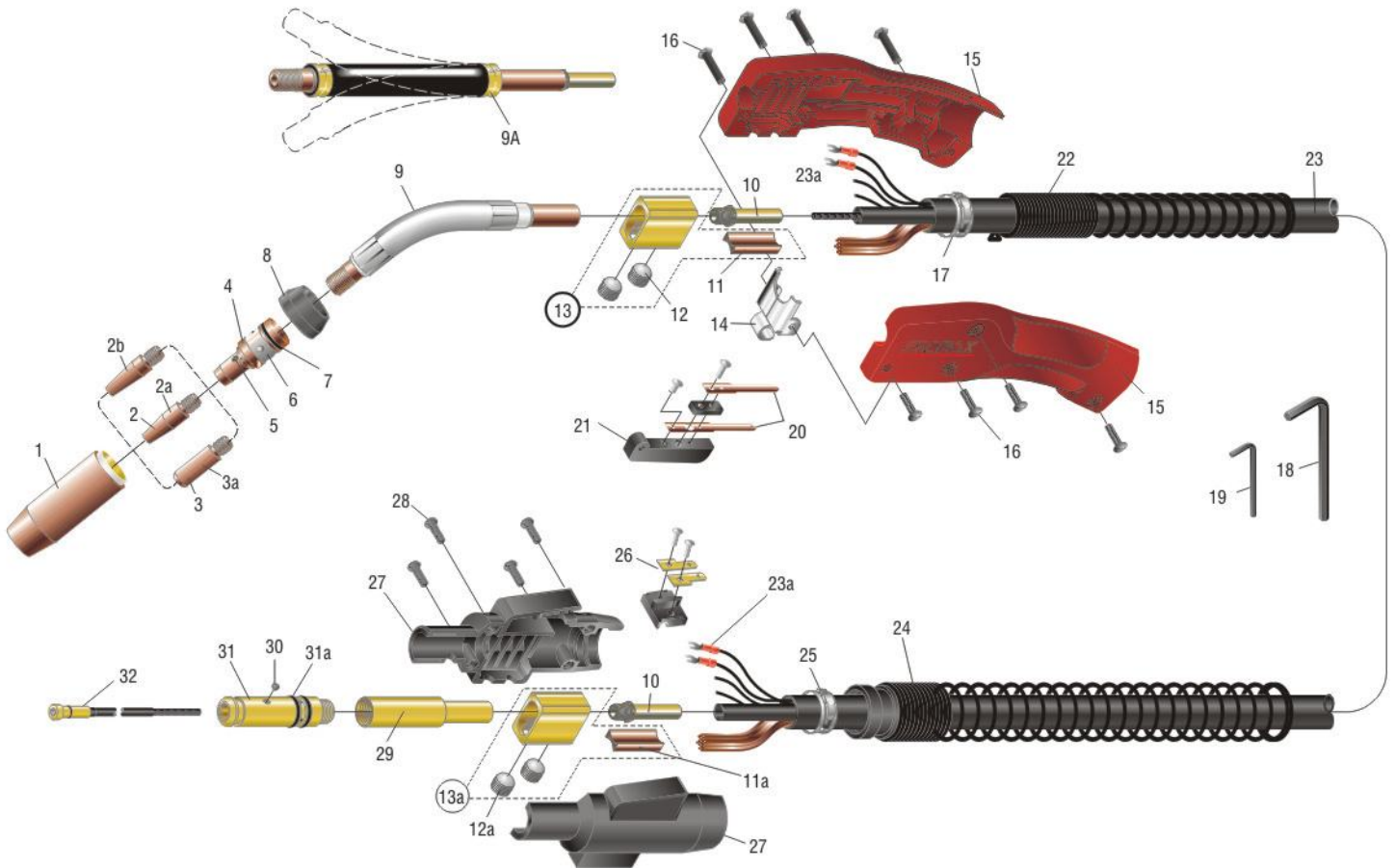
- Ergonomic handle
- Spare switch leads
- Extra flexible cable
- Spring strain reliefs
- Jacketed gooseneck

PROFAX NO.	LENGTH	WIRE SIZE	PROFAX NO.	LENGTH	WIRE SIZE	PROFAX NO.	LENGTH	WIRE SIZE	PROFAX NO.	LENGTH	WIRE SIZE
HD250-3035-10	10'	.035	HD250-3035-12	12'	.035	HD250-3035-15	15'	.035	HD250-3035-20	20'	.035
HD250-4045-10	10'	.045	HD250-4045-12	12'	.045	HD250-4045-15	15'	.045	HD250-4045-20	20'	.045
HD250-052-10	10'	.052	HD250-052-12	12'	.052	HD250-052-15	15'	.052	HD250-052-20	20'	.052
									HD250-3035-25	25'	.035
									HD250-4045-25	25'	.045
									HD250-052-25	25'	.052

### TO ORDER DIRECT CONNECT MIG GUNS

- Standard -** All wire feeders that accept the "PROFAX" rear adapter. e.g. HD250-3035-10
- Lincoln® Direct -** Add an LN for the standard Lincoln 3/4" dia. rear adapter. e.g. HDLN250-3035-10
- Add an LP for the Lincoln Powermig 255. e.g. HDLP250-3035-10
- Miller® Direct** Add an M. e.g. HDM250-3035-10
- Euro-Quick** Add an X. e.g. HDX250-3035-10

SEE PAGES 46-47 for more details on direct connects  
SEE PAGES 78-79 for list of adapter kits





# Platinum HD250 Amp Mig Gun Parts List



NO.	PROFAX NO.	DESCRIPTION	NO.	PROFAX NO.	DESCRIPTION
1.	27S50	H.D. nozzle 1/2" (copper)	12a.	A-532-24	9/16" ball point screws
	27S62	H.D. nozzle 5/8" (copper) <b>(standard)</b>	13.	102	Cable connector block assembly
	27S75	H.D. nozzle 3/4" (copper)	13a.	104	Cable connector block assembly
	27S50GL	H.D. nozzle 1/2" (copper) <b>(Use 17SLT series tip)</b>	14.	154HD	Hanger
	27S62GL	H.D. nozzle 5/8" (copper)	15.	82HD	Heavy duty handle w/screws
	27S75GL	H.D. nozzle 3/4" (copper)	16.	122FM-SET	Binders (4 ea.) and screws (4 ea.) for handle
	27T38	Tapered nozzle 3/8" (brass) <b>(Use 17SLT series tip)</b>	17.	132-12	Clamp - handle
	27T50	Nozzle 1/2" bottle (copper)	18.	AL-300-25	7/32" hex wrench
	27K50	M.D. nozzle 1/2" (copper)	19.	44-25	5/64" hex wrench
	2.	17ST-35	Contact tip .035 .044	20.	92C
17ST-40		Contact tip .040 .049	21.	92	Trigger switch assembly
17ST-45		Contact tip .045 .054	22.	142-6S	Spring strain relief for handle
17ST-52		Contact tip .052 .064	23.	250-10	10' replacement cable assembly
2a.	16ST-35	Contact tip .035 .044	250-12	12' replacement cable assembly	
	16ST-40	Contact tip .040 .049	250-15	15' replacement cable assembly	
	16ST-45	Contact tip .045 .054	250-20	20' replacement cable assembly	
	16ST-52	Contact tip .052 .064	250-25	25' replacement cable assembly	
2b.	17SLT-35	Contact tip .035 .044	250K	Cable, bulk (per foot)	
	17SLT-40	Contact tip .040 .049	250CK	Cloth wrapped cable, bulk (per foot) for guns longer than 15'	
	17SLT-45	Contact tip .045 .054	23a.	244	Terminal
	17SLT-52	Contact tip .052 .064	24.	R185-S	spring
3.	16S-35	Contact tip .035 .044	25.	132-12	Clamp - connector block
	16S-40	Contact tip .040 .049	26.	194	Connector tab assembly
	16S-45	Contact tip .045 .054	27.	R185-H	Housing
	16S-52	Contact tip .052 .064	28.	R185-SC	Screws for housing (4)
3a.	17S-35	Contact tip .035 .044	29.	R172-UA	Standard connector plug w/62N
	17S-40	Contact tip .040 .049	R172-UAG	Connector plug w/gas hole w/62N	
	17S-45	Contact tip .045 .054	30.	44C	Set screw for conduit 8-32
	17AS-364	Contact tip 3/64" aluminum .060	31.	R174-C	Connector, Century®
	17S-52	Contact tip .052 .064		R174-E	Connector, Esab®
4.	52HD	Gas diffuser	R174-H	Connector, Hobart®	
5.	44C	Set screw for gas diffuser/conduit	R174-L	Connector, Lincoln®	
6.	240	Retaining ring	R174-M	Connector, Miller®	
7.	260	O-ring	R174-T	Connector, standard	
8.	17SW	H.D. shock washer	31a.	224	O-ring
9.	63-30HDJ	Jacketed gooseneck 30°	32.	42-23-15	15' wire conduit assembly .023
	63-45HDJ	Jacketed gooseneck 45° <b>(standard)</b>		42-3035-15	15' wire conduit assembly .030-.035
	63-60HDJ	Jacketed gooseneck 60°		42-4045-15	15' wire conduit assembly .040-.045
	63-180HDJ	Jacketed gooseneck 180°		42-116-15	15' wire conduit assembly .052 - 1/16"
9a.	TF-3HD	H.D. Flexible barrel (optional)		42-3035-25	25' wire conduit assembly .030-.035
	TFX-3HD	H.D. Flexible barrel for extreme heat (optional)		42-4045-25	25' wire conduit assembly .040-.045
10.	62N	Nipple		42-116-25	25' wire conduit assembly .052 - 1/16"
11.	112	Separator		42N-3545-15	15' teflon conduit assembly (aluminum).035-.045
11a.	114	Separator			
12.	1-MBP-10	18 ball point screws			

250 Amp H.D. Parts  
Contact Tips & Parts List

## 2 Roll & 4 Roll Wire Feeders

Designed to work with any CV power source.

### PRO II & PRO IV

See Page 110



## CO<sub>2</sub> Heated Regulator/FlowGauge

### SPECIFICATIONS:

- 120V AC/190 watt
- 0 - 125 CFH flow-rate

### High volume CO<sub>2</sub> Regulator

### FlowGauge with built in heater.

- Prevents regulator freeze-up
- Extends regulator/FlowGauge life
- Eliminates porosity in welds due to loss of gas coverage



Also Available in 240V 50/60hz.

PROFAX NO.	GAS SERVICE	CGA INLET
RFG-320-H	CO <sub>2</sub>	320



# Platinum 250 Amp Heavy Duty



250 Amp H.D. Mig Gun

PROFAK NO.	DESCRIPTION	TIP I.D.		PROFAK NO.	DESCRIPTION	
17S-35	Contact tip .035	.044	<p>Recessed</p> <p>M8 - 1.25 Thd.</p> <p>3/8"</p> <p>1.350</p> <p>*Standard tip shipped with gun.</p>	27T50	Nozzle 1/2"	<p>1/2" I.D.</p> <p>2-7/8"</p> <p>(Use with 17ST series tips)</p>
17S-40	Contact tip .040	.049				
17S-45	Contact tip .045	.054				
17AS-364	Contact tip 3/64" aluminum	.060				
17S-52	Contact tip .052	.064				
17ST-35	Contact tip .035	.044	<p>Recessed</p> <p>M8 - 1.25 Thd.</p> <p>3/8"</p> <p>1.350</p>	27K50	M.D. Nozzle 1/2"	<p>1/2" I.D.</p> <p>2-7/8"</p> <p>(Use with 17ST series tips)</p>
17ST-40	Contact tip .040	.049				
17ST-45	Contact tip .045	.054				
17ST-52	Contact tip .052	.064				
17SLT-35	Contact tip .035	.044	<p>Recessed</p> <p>M8 - 1.25 Thd.</p> <p>3/8"</p> <p>1.350</p> <p>(Use with 27T38 nozzle)</p>	27S50	H.D. Nozzle 1/2"	<p>1/2" I.D.</p> <p>2-7/8"</p> <p>(Use with 17ST series tips)</p>
17SLT-40	Contact tip .040	.049				
17SLT-45	Contact tip .045	.054				
17SLT-52	Contact tip .052	.064				
16S-35	Contact tip .035	.044	<p>Flush</p> <p>M8 - 1.25 Thd.</p> <p>3/8"</p> <p>1-1/2"</p>	27S62	H.D. Nozzle 5/8"	<p>5/8" I.D.</p> <p>2-7/8"</p>
16S-40	Contact tip .040	.049				
16S-45	Contact tip .045	.054				
16S-52	Contact tip .052	.064				
16ST-35	Contact tip .035	.044	<p>Flush</p> <p>M8 - 1.25 Thd.</p> <p>3/8"</p> <p>1-1/2"</p>	27S75	H.D. Nozzle 3/4"	<p>3/4" I.D.</p> <p>2-7/8"</p>
16ST-40	Contact tip .040	.049				
16ST-45	Contact tip .045	.054				
16ST-52	Contact tip .052	.064				
52HD	Diffuser		<p>M8 - 1.25 Thd. 1/2 - 20 Thd.</p> <p>1-3/4"</p>	27S50GL	H.D. Nozzle 1/2"	<p>1/2" I.D.</p> <p>2-7/8"</p> <p>(Use with 17ST series tips)</p> <p>Cut View</p>
17SW	Insulator		<p>7/8" I.D.</p> <p>3/4"</p>	27S62GL	H.D. Nozzle 5/8"	<p>5/8" I.D.</p> <p>2-7/8"</p> <p>Cut View</p>
27T38	Nozzle 3/8"	3/8" I.D.	<p>3/8" I.D.</p> <p>2-13/16"</p> <p>(Use with 17SLT series tips)</p>	27S75GL	H.D. Nozzle 3/4"	<p>3/4" I.D.</p> <p>2-7/8"</p> <p>Cut View</p>

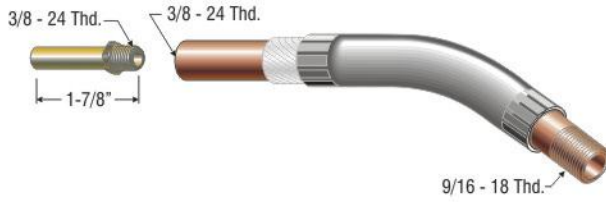




# Platinum 250 Amp Heavy Duty



250 Amp H.D.  
Mig Gun



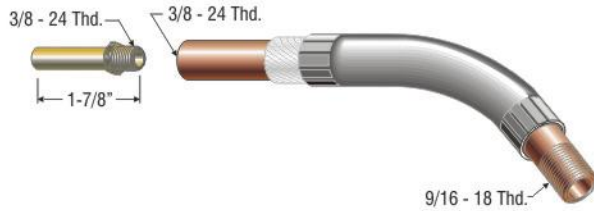
PROFAX NO.	DESCRIPTION
63-30HDJ	Jacketed conductor tube 30°
62N	Nipple - included

Special length and bend goosenecks available on request.



PROFAX NO.	DESCRIPTION
63-60HDJ	Jacketed conductor tube 60°
62N	Nipple - included

Special length and bend goosenecks available on request.



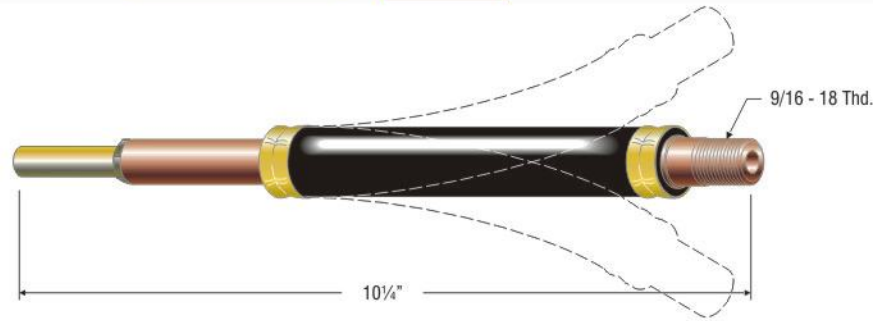
PROFAX NO.	DESCRIPTION
63-45HDJ	Jacketed conductor tube 45°
62N	Nipple - included

Special length and bend goosenecks available on request.

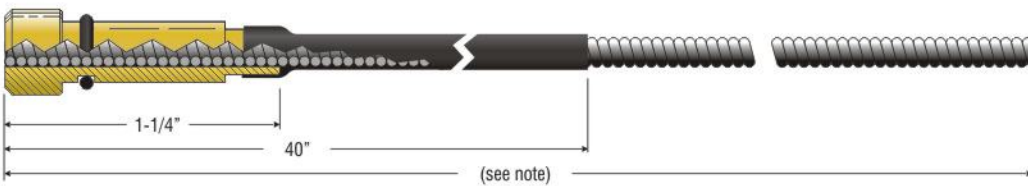


PROFAX NO.	DESCRIPTION
63-180HDJ	Jacketed conductor tube 180°
62N	Nipple - included

Special length and bend goosenecks available on request.

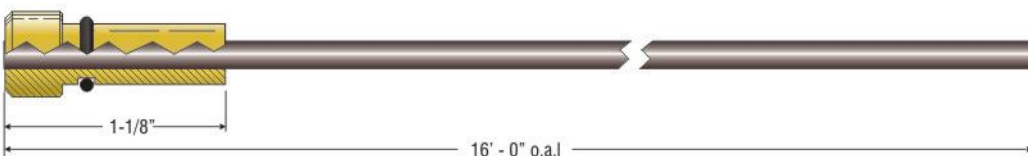


PROFAX NO.	DESCRIPTION	PROFAX NO.	DESCRIPTION	
TF-3HD	PROFAX heavy duty flexible barrel	TF3HD-8SP	PROFAX flexible barrel 12 3/4" over all length	FOR SPECIAL APPLICATIONS THESE TF3HD'S ARE AVAILABLE ON REQUEST.
TFX-3HD	PROFAX heavy duty flexible barrel for extreme heat	TF3HD-12SP	PROFAX flexible barrel 16 3/4" over all length	
		TF3HD-16SP	PROFAX flexible barrel 20 3/4" over all length	



Note: 15' wire conduit assembly (16' - 0" o.a.l.)  
25' wire conduit assembly (26' - 0" o.a.l.)

PROFAX NO.	DESCRIPTION	I.D.	O.D.
42-23-15	15' wire conduit assembly — used with .023 diameter wire	.044	.125
42-3035-15	15' wire conduit assembly — used with .030-.035 diameter wire	.052	.156
42-4045-15	15' wire conduit assembly — used with .040-.045 diameter wire	.060	.156
42-116-15	15' wire conduit assembly — used with .052-1/16" diameter wire	.078	.156
42-3035-25	25' wire conduit assembly — used with .030-.035 diameter wire	.052	.156
42-4045-25	25' wire conduit assembly — used with .040-.045 diameter wire	.060	.156
42-116-25	25' wire conduit assembly — used with .052-1/16" diameter wire	.078	.156



PROFAX NO.	DESCRIPTION	I.D.	O.D.
42N-3545-15	15' teflon conduit assembly — used with .035-.047 aluminum wire	.065	.138



# Direct Connects **Platinum** Compact 250 Amp Mig Gun Slim Line 250 Amp and Heavy Duty 250 Amp Mig Gun



The following direct connects are available by placing the letters shown below before the gun package number.

**Example:** add an "M" to 250-3035-10; eg M250-3035-10 is now a Miller® direct connect gun.

250 Amp Mig Gun  
Direct Connects

**C-Century®:** Powermate 225. Solar®125 (New -1982), Solar®165 (New-1982) Solar®2-175 (New-1982), Solar®2120 and Portable mig.



**CK-Systematics®:** MP-140, 175, 230 and 250.



**E-Esab®(L-Tec/Linde):** All wire feeders with the MT200/400 Linde mig gun adapter installed.



**H-Hobart®:** Betamig 200, 250 and 251.



**LN-Lincoln®:** SP150, SP200, LN7, LN8, LN9, LN25, LN742, and Synergic 7. Also LN10, DH10, and STT10 with K1500-1 installed.

**Note:** For LN-25 Pro Order Gun with standard **PROFAX** back end and LAK 354 installed



**LP-Lincoln®:** Powermig 200, 210, 215XT, 225, 255, 255C, 300 and 350MP.



**M-Miller®:** Millermatic 180, 185, 200, 210, 212, 250, 250x, 251, 252, 300, 350, 350P, Pulsar and Vintage. S21E, S22A, S32, Super 32, Extreme 8VS, 12VS, and all 50, 60, and 70 series feeders. 8VS, 12VS, R115 and 22A, 24A

**Hobart®:** Betamig 2510 and Olympic VS.



**X-Euro-Quick:** Equipment

Aircor®: AutoPak 130, Dipstick 160 (New), Dipstick 200 (New) Systems I, Universal, Mity 4 and Dip-Pak 250.

Century®(Solar®): Solar 165 (Old)(117-003), Solar 2-125 (Old) and All Star.

Lincoln®: SP250 & SP255. Note: Will not have remote wire speed & voltage control capability.

Esab®: Mig 2E, Mig 4HD, Mig 4AF, Migmaster 250,251, 252 and 300I, and Mobilmaster.

Powcon®: PD10, PD20 & PD30.

PROFAX: Pro Ix and Pro IVx.

SIP®: Topmig 170, 195, Autoplus 150 dual purpose, Autoplus 171 & 196, Autoplus 180 dual purpose, Autoplus Super 210 dual purpose, Autoplus Super 215, Ideal Super 180,210, 240, 300, 350 & 500.

46 Schumacher®: Model 90201.



**Direct Connects are also available for the following**

**CA-Compac®:** M125, M170, M150S and M250S.

**OQ-Oxomatic®:** PS-30Q and AVC-30Q.

**P-Panasonic®:** Gunslinger 260.



\*For adapter kits for other style feeders see page 78.

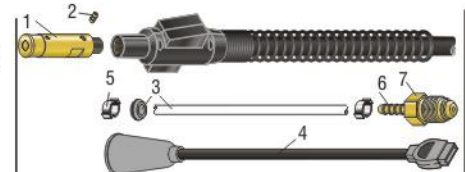
### Direct Mount Conversion Kits

Used for converting an existing gun to a different wire feeder.

Standard: TAK-250

Miller®: MAK-250

Lincoln®: LAK-250



NO.	PROFAX NO.	DESCRIPTION
1.	R174-T	Connector - standard PROFAX
2.	AK-354	Control cord

NO.	PROFAX NO.	DESCRIPTION
1.	R174M-N	Nipple for Miller® connection
2.	R174-M	Connector for Miller®
3.	MSAK-354	Control cord

NO.	PROFAX NO.	DESCRIPTION
1.	R174-LC	Connector for Lincoln®
2.	35-170-5	Gas nipple
3.	MSAK-353	Gas hose w/grommet
4.	LAK-354	Control cord
5.	AK-353-2A	Gas hose clamp (2)
6.	1245	Gland
7.	1255	Nut

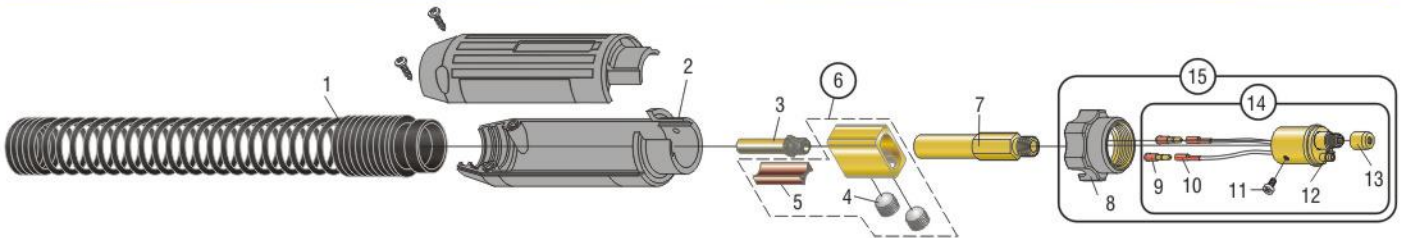
250 Amp Mig Gun  
Conversion kits

Conversion kits to convert the Compact 250 amp mig gun to direct mount. Includes connector plug, electrical cord w/plug, and gas hose.

<b>CAAK-250</b>	Comarc®: M250S.
<b>EAK-250</b>	Esab®(L-Tec/Linde): All wire feeders with the MT200/400 Linde mig gun adapter installed.
<b>HAK-250</b>	Hobart®: Betamig 200, 250 and 251.
<b>LAK-250</b>	Lincoln®: LN7, LN8, LN9, LN25, LN742, and Synergic 7. Also Lincoln® LN10, DH10, & STT10 with K1500-1 installed.
<b>LPAK-250</b>	Lincoln® POWERMIG
<b>MAK-250</b>	Miller®: Millermatic 180, 185, 200, 210, 212, 250, 250x, 251, 300, 350, 350P, Pulser and Vintage. S21E, S22A, S32, Super 32, Extreme 12VS, and all 50, 60, and 70 series feeders. 8VS, 12VS, R115 and X-Treme® 8VS and 12VS Hobart®: Betamig 2510 and Olympic VS.

<b>O1AK-250</b>	Oxomatic®: AVC I, AVC 8 & PT8.
<b>OQAK-250</b>	Oxomatic®: PS-30Q & AVC-30Q.
<b>PAK-250</b>	Panasonic®: Gunslinger 260.
<b>TAK-250</b>	Hobart® series 2000, 2200, 2210, 2400, 2410, Heavy Duty, Model 17, Hefty, Mijit 17, Portafeed 17, Portawire 17, Portafeed 1000, Ultrafeed 1000, Powcon® PD-1, PD-IE & PDVS-1, Thermal Arc® TA-3, TAF-2, TAF-4 & Viking 250. Profax Pro II, Pro IV, Lincoln® Wirematic 250 & 255. LN 10, DH10, & STT10 w/K1500-2 installed.

### Euro-Quick End for the Platinum Compact 250, Slim Line 250, and Heavy Duty 250 Amp Mig Gun



NO.	PROFAX NO.	DESCRIPTION	NO.	PROFAX NO.	DESCRIPTION	NO.	PROFAX NO.	DESCRIPTION
1.	R185-S	Spring	7.	140-UA	Euro connector	13.	174EX-1C	Conduit nut
2.	2545-3	Cable support	8.	2545-4	Machine Nut	14.	2545	Euro-Quick connector assembly
3.	62N	Nipple	9.	2545-6	Trigger connection male	15.	2545-C	Euro-Quick connector assembly w/machine nut
4.	A-532-24	9/16"-18 ball point screw	10.	35-350-1	Butt connector			
5.	114	Separator	11.	2-MS	Metric screw			
6.	104	Cable connector block assembly	12.	35-40-1	O-ring			



### Universal flow tester

To convert to CFH divide  
 $LPM / .472 = CFH$

PROFAX NO.	DESCRIPTION
50020	Flow tester liters per minute

### Regulator/Flowmeter

#### SPECIFICATIONS:

- Brass body
- Preset @ 30 psi
- Flow meter range - 10-60 scfh
- Economical design



PROFAX NO.	GAS SERVICE	CGA INLET
RF1430-580	Argon & Argon/CO <sub>2</sub> Mixes	580
RF1430-320	CO <sub>2</sub>	320